

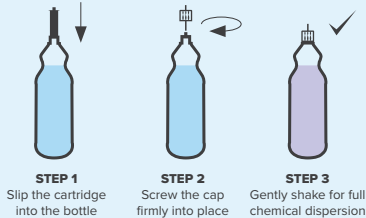
PADS, BRUSHES & ACCESSORIES

K Indicates items which are included in the MS2000 Kit

 <p>MEDIUM DUTY Brilliant cleaning results on all smooth and textured surfaces CODE: MS1041</p>	 <p>TILE & GROUT Abrasive filaments for deep cleaning tiles CODE: MS1039TG</p>	 <p>AGGRESSIVE DUTY Ideal for dirty concrete and exterior surfaces CODE: MS1039P</p>	 <p>AGGRESSIVE DUTY WITH ANTI-SPLASH All the features of MS1039P with a black ring to keep solution inside the brush. CODE: MS1039SG</p>	 <p>DELICATE Ideal for carpets and painted and wooden surfaces CODE: MS1038</p>	 <p>FLAGGED TIPPED Very delicate, ideal for dusting air vents or for vehicle cleaning. CODE: MS1044</p>
 <p>BLACK STRIPPING Stripping floor polish CODE: MS1060</p>	 <p>GREEN SCRUBBING Floor scrub cleaning CODE: MS1062</p>	 <p>BLUE CLEANING General floor and stair cleaning CODE: MS1068</p>	 <p>RED SPRAY CLEANING Polishes floors and stairs CODE: MS1064</p>	 <p>WHITE DRY BUFFING Dry buffs floors and stairs CODE: MS1066</p>	 <p>MAROON STRIP Our most aggressive stripping pad CODE: MS1069</p>
 <p>MELAMINE For an exceptional deep clean of all hard surfaces CODE: MS1070</p>	 <p>WAX APPLICATOR For vehicle waxing CODE: MS1040</p>	 <p>SPONGE DISC For delicate surfaces like vehicle cleaning CODE: MS1030HD</p>	 <p>CRYSTALISER PAD Stainless steel for crystallising marble CODE: MS1071</p>	<p>DIAMOND TWISTER® PADS For restoring and polishing marble and terrazzo floors, just add water. STEP 1 WHITE / REFURBISH CODE: MS211763 STEP 2 YELLOW / SHINE CODE: MS211760 STEP 3 GREEN / MAINTAIN CODE: MS211759</p>	
 <p>MICROFIBRE For glass, mirror and stainless steel polishing and carpet spot cleaning CODE: MS1053</p>	 <p>PAD HOLDER Velcro drive plate for attaching all our pads. CODE: MS1046</p>	 <p>STAIR RISER This tool is perfect for corridor, base board and stair cleaning. CODE: MS3060</p>	 <p>EXTENSION CABLE 25ft Extension cable CODE: MS1025</p>	 <p>ACCESSORY BAG The perfect place to store your pads and brushes CODE: MS3060</p>	 <p>CARRY BAG Transport your MotorScrubber with ease in this carry case CODE: MS3065</p>



Our specially formulated range of super concentrate, colour coded chemicals have been designed to give an outstanding clean. Degreaser (JETF1); Perfect for greasy kitchens, walls and floors. Tile & Grout (JETF2); Ideal for tiled washroom floors and walls. Hard Surface (JETF3); For all washable smooth surfaces including glass, mirrors and stainless steel.



ACHIEVE THE PERFECT DILUTION



TECHNICAL DATA

BATTERY	12 Volt, 7 Ah sealed lead acid	BRUSH RPM	354 rpm
RUN TIME	4 Hours	MOTOR TORQUE & POWER	11.18kg/cm - Min 25W - Max 86W
CHARGING TIME	8 Hours	MACHINE WEIGHT	2.5kg
SCRUBBING WIDTH	18cm	BACK PACK WEIGHT	3.5kg
PERFORMANCE	120m ² /hour	DIMENSIONS	W170 x H150 x L1120mm
LINEAR PERFORMANCE	666m/hour	PUMP PRESSURE	7.9 Bar
BRUSH PRESSURE	Practical in use 5kg = 19.7g/cm ² P	PUMP OPEN FLOW	5 Litre / Min

JET
MotorScrubber



SMALL
MACHINE
BIG
POWER

To see the full range of accessories visit motorscrubberclean.com



Introducing the **MotorScrubber Jet** model with brand new spray function, giving you a total clean up to 3 metres high

- 1. Adjustable jet at the scrubbing head allows the direct application of solution to surface
- 2. The specially designed flip clip lets the user make super fast adjustments to the telescopic pole, reaching to over 3 metres
- 3. New sturdy aluminium handle with soft rubber provides extra control
- 4. IP67 rated waterproof switches
- 5. Solid Stainless steel LEMO electrical connection for Ultra reliability, "military grade"
- 6. The 1L tank is securely and neatly contained within the backpack. It can be easily removed and replaced for quick refilling
- 7. Commercial grade high pressure pump delivers cleaning solution through the coiled water pipe, hidden inside the telescopic handle, to be sprayed at the scrubbing head
- 8. Super comfortable backpack with padded shoulder and waist support.

Precision engineered in the UK from the highest quality components, our goal was to build an indestructible cleaning tool.



CORDLESS

Super portable, you can clean walls and floors with a variety of coverings, it's ideal for all hard to reach areas.



4 HOURS RUNTIME

A real workhorse with an impressive 4 hours runtime from one charge. Taking only 8 hours to fully re-charge.



LIGHTWEIGHT

Weighing only 2.5kg (6kg with the harness) it is extremely lightweight to use yet heavy duty in its construction.



100% WATERPROOF*

The MotorScrubber is 100% waterproof and submersible in water with no shock risk due to its extra low safe voltage.

* Guidelines Apply



EFFECTIVE CLEANING

The reliable high torque motor allows for fantastic washing, polishing and cleaning results up to 3 metres high.



UK MANUFACTURED

Using the highest quality, durable components every MotorScrubber is proudly manufactured in the UK.

